



KELLER

QUICK GUIDE LEVEL PROBES

SERIES

26C, 26Y, 27Y
26X, 26Xi, 27X, 26KyX, 36KyX, 36XS
36XW, 36XiW, 36XiW-CTD
46X

and various other custom and application specific series



CONTACT

KELLER Druckmesstechnik AG St. Gallerstrasse 119 CH-8404 Winterthur Tel. +41 52 235 25 25 info@keller-druck.com	KELLER Gesellschaft für Druckmesstechnik mbH Schwarzwaldstrasse 17 DE-79798 Jestetten Tel. +49 7745 9214 0 sales.eu@keller-druck.com
--	---

This quick guide is an extract from the detailed operating instruction for level probes, which can be found at www.keller-pressure.com for the respective product.

DISCLAIMER

KELLER accepts no liability in the event of improper use, damage or modification to the device or failure to observe this quick guide.

INTENDED USE

- Level probes are used to convert a hydro static pressure into a standardised electrical signal.
- The level probes in the various series referred to have been developed for relative or absolute pressure measurement of water or fill levels depending on their type.
- Make sure that the device is suitable for your corresponding application. Please get in touch with your direct sales contact if you are unsure of anything.

- The technical specifications listed in the data sheet are only binding insofar as no other agreements have been made.

PRODUCT IDENTIFICATION

KELLER				SWISS MADE		CE
Type	PR-26Y	WH:	n.c.			
Range	0...10 mH ₂ O	RD:	OUT/GND			
Output	4...20 mA	BK:	+Vs			
Supply	8...32 VDC	P/N	222625.0001			15/22

Example of label

The label and the specifications on the product serve to identify it. The laser engraving or adhesive label typically contain the following details:

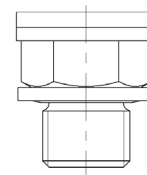
- Product number
- Type designation
- Pressure range
- Output signal
- Supply voltage
- Electrical connections
- Production date

Products with a serial number display this on the metal housing.

MOUNTING

- DANGER:** The device may only be installed on systems that are depressurised or de-energised.
- WARNING:** The device must not be used in hazardous areas.
- Do not remove the packaging until immediately before installation to avoid damaging the diaphragm and/or the thread.
- As standard, level probes are delivered without accessories such as mounting materials.
- Avoid excessive tensile loads on the cable connections.
- Make sure the holes in the end cap are free from impurities/dirt.

INSTALLATION OF SCREW-IN LEVEL PROBE WITH PRESSURE CONNECTION



Pressure connection example with USIT ring.

- Use a suitable tool for installation.
- Make sure to seal the pressure connection correctly.
- Tighten the level probe with the appropriate amount.
- Install the level probe in such a way that it cannot be exposed to any prohibited mechanical tension.

ELECTRICAL INSTALLATION

- Connect the device according to the electrical connections on the label or the specification.
- Prevent the cable from kinking.
- The following minimum bending radiuses must be adhered to when installing the cable:

Minimum bending radius for cable without capillary:

permanent installation: 6-fold cable diameter
flexible usage: 12-fold cable diameter

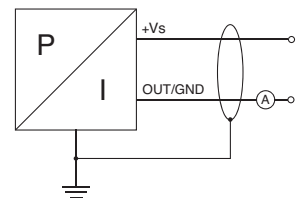
Minimum bending radius for cable with capillary:

15-fold cable diameter

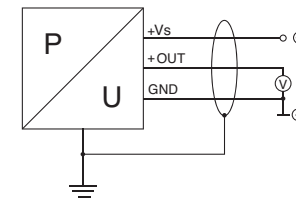
- Ensure adequate earthing via the cable shield.
- Avoid potential differences between measuring and connection points. The resulting ground loops can lead to a defect of the level probe.
- For reference devices (relative pressure versions, PR), make sure there is adequate, dry ventilation.
- Make sure the cable is mounted securely, e.g. by using an additional retaining cable, for cable lengths > 50 m.

CONNECTION DIAGRAMS

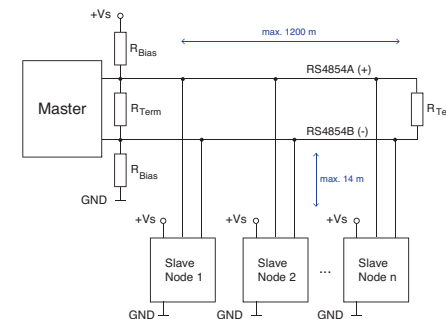
2-wire / 4...20 mA



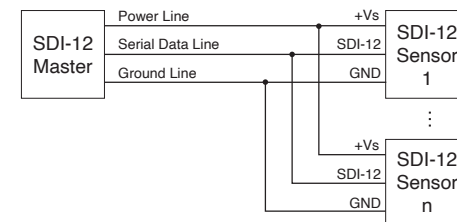
3-wire / 0...10 V / 0,5...4,5 V / etc.



RS485



SDI-12



May vary from series to series. Please see the relevant communication protocol for additional information.

COMMISSIONING

- WARNING:** Before operating the device for the first time, check whether the device has been installed properly.
- WARNING:** The device may only be operated by qualified personnel who have read and understood the operating instructions.
- WARNING:** The level probe must only be operated within the terms of the specifications. See the technical data in the data sheet or the agreed specifications.



Subject to technical alterations.
450565.0119, Version 02/2024